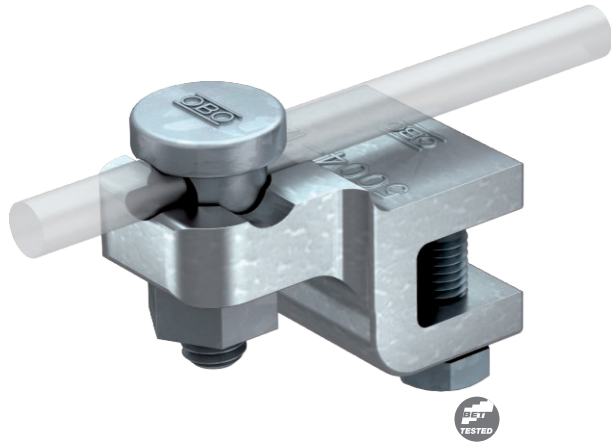


# Technical data sheet

## Folding and construction clamp, 10–20 mm

Item no. 5304407



- Flange thickness to 12 or 10–20 mm
- With pre-mounted Fix-Kontakt clamping screw 5000
- 2 hexagonal bolts M8 x 20, screws made of hot galvanised steel,
- Terminal block made of malleable iron, hot galvanised
- Mounting of the round conductors either vertical or transverse to structure
- Corresponds to the requirements of DIN VDE 0185-305-3



TG Malleable iron  
FT Hot-dip galvanised

### Product description

### Master data

Item no.	5304407
Type	5004 DIN-FT 12
Description 1	Folding clamp
Description 2	fix contact
Dimension	12mm
Material	Cast iron
Material symbol	TG
Surface	Hot-dip galvanised
Surface to DIN	DIN EN ISO 1461
Surface symbol	FT
Weight	18,73 kg/100 pc.

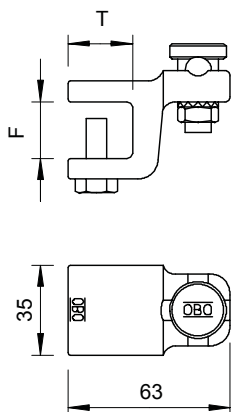
# Technical data sheet

## Folding and construction clamp, 10–20 mm

Item no. 5304407



### Technical data



Dimension L	55,00 mm
Dimension T	20,00 mm
Type of fastening screw	Clamping screw
Type of connector	Clamp connector
Lightning current carrying capacity	N/50 kA
Suitable for connection	Other
Clamping range	max. 12 mm
Fit	Rd 8-10 mm
Intermediate plate	<input type="checkbox"/>