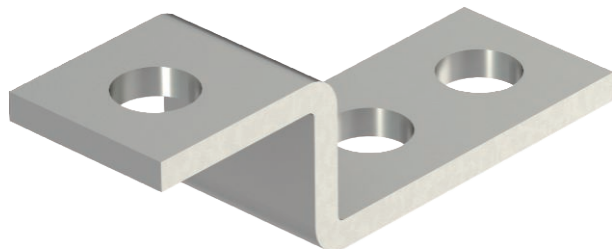


# Technical data sheet

## Connection and end piece

Item no. 5334942



5011: End piece

- For attaching to steel structures or bolting to earthing fixed points
- For attachments: Round conductor Rd 8-10 and flat conductor FL30 x 3.5
- 2x attaching hole  $\varnothing$  11 mm
- 1x attaching hole  $\varnothing$  D mm

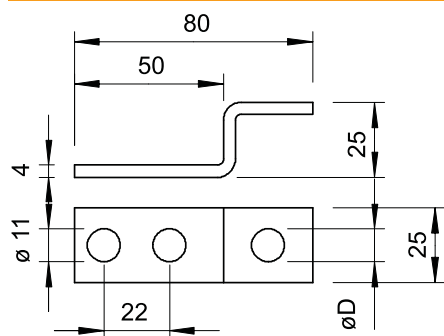
**A4** Stainless steel, rustproof 1.4571

### Product description

### Master data

Item no.	5334942
Type	5011 VA M12
Description 1	End piece
Dimension	M12
Material	Stainless steel, material no. 1.4571
Material symbol	A4
Quality	1,4571
Weight	7,05 kg/100 pc.

### Technical data



Dimension D	13,00 $\varnothing$ mm
Type of fastening screw	Other
Type of connector	End piece
Suitable for connection	Round conductor Rd 8-10 / flat conductor FI 30
Intermediate plate	<input type="checkbox"/>